

Grower Sub-Group



DUPAGE COUNTY FOOD SECURITY COUNCIL

Farm-to-School: Statewide

- Seven Generations Ahead Manages
- Harvest of the Month: Focus on a fruit/vegetable that is harvestable that month
- Increase in the students' consumption of fruits and vegetables as a part of the school lunch program.
- “Apple Crunch”
- DuPage County schools have primarily focused on garden development
- Challenge: FUNDING



Diane Chapeta, Illinois Farm to School
Network Coordinator
[Seven Generations Ahead](http://SevenGenerationsAhead.org)
diane@sevendgenerationsahead.org



Good Worx, Inc - Darien

- DuPage County's first community garden project growing exclusively with and for some of our at-risk neighbors and our local food pantry partners May of 2015
- CONTAINER GARDENING
- CSA Model: Volunteer time for shares
- Neighborhood focused
- **Gardening is a luxury:** make the access to growing space as easy as possible and 24/7 where possible.
- Communication tools critical
- Challenge: VOLUNTEER RUN



Contact:
Cynthia McGann - 630-272-0915



Liberty Prairie Foundation – Lake County

Incubate and mentor beginning sustainable local food farmers, provide fresh food access in underserved communities, educate and inspire youth, connect farmers with land, and shape policy that affects our local food system.

- Farm Business Development Center
- Land Access Project
- Prairie Farm Corps
- Community Food Systems
 - *Connecting organizations for collaboration*
 - *Food distribution and funding sources*
 - *LC Nature Network; Food Task Force; Alliance for Human Services; Good Greens*
- **COLLECT DATA:** Lbs. food distributed, volunteers/hours engaged, number of families reached, surveys



Emily Weber
Director, Community Food Systems
Emily@libertyprairie.org



The Resiliency Institute - Suburbs

- Growing Food Security program
- Perennial based forest gardens - Two projects in DuPage
- Transforms resource intensive public lawn space into biologically diverse, resource conserving, food generating, community resource
- Homeowners **“Grow a Fruit Tree Guild”** = “Victory Garden” movement
- Educational programming - Permaculture
- Challenge: NEW CONCEPT

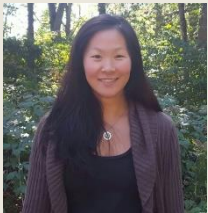


Jodi Trendler, Executive Director
The Resiliency Institute
jodi@theresiliencyinstitute.net
630-886-5159



GardenWorks Project

- RAISED BED Gardens:
 - *Supplies*
 - *Seeds*
 - *Support*
- Education
- Food Growers Network - \$20/year
- Suburban Agriculture Resource Center – West Chicago
- Volunteer



Jeannie Iseman, Executive Director
jeannie@gardenworksproject.org




SINCE 2012
VOLUNTEERS, COMMUNITY PARTNERS AND DONORS
HELPING NEIGHBORS GROW FOOD AT HOME


214 GARDENS BUILT IN DUPAGE COUNTY


844 PEOPLE LIVE AT HOMES WITH A GARDENWORKS PROJECT GARDEN


34 DUPAGE FOOD PANTRIES AND SOCIAL SERVICE ORGS CONNECT US WITH PEOPLE IN NEED



Sustain DuPage – L.I.F.E. Atlas

- **Farms/CSA:**
 - [Green Earth Institute](#)
 - [Mayneland Farm](#)
 - [Sonny Acres Farm](#)
 - [Three Plaid Farmers](#)
 - [Up Farms](#)
 - [Wellhausen Farms](#)
 - [The Farm](#)
- [Farmer's Markets](#)
- **Farm Stands**
- **Home Delivery**
- **Community Gardens**
 - [DuPage County Website](#)
 - **FOOD RIGHTS**
- **Food Co-Ops**
 - [Prairie Food Co-op](#)
- **Food Education Sites**
- **Manure Sources**
- **Rentable Kitchens**
- **Nurseries & Greenhouses**
- **Seed Libraries**

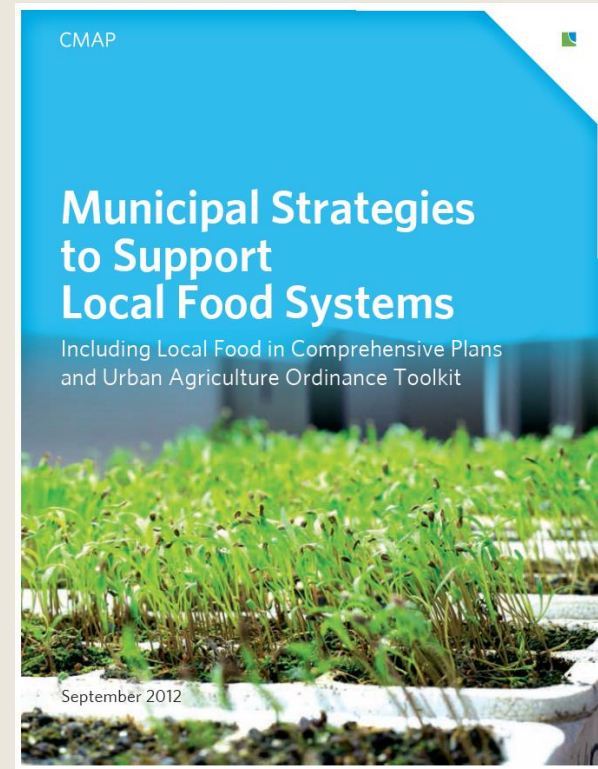


Andrew VanGorp, President
Tosustaindupage@gmail.com



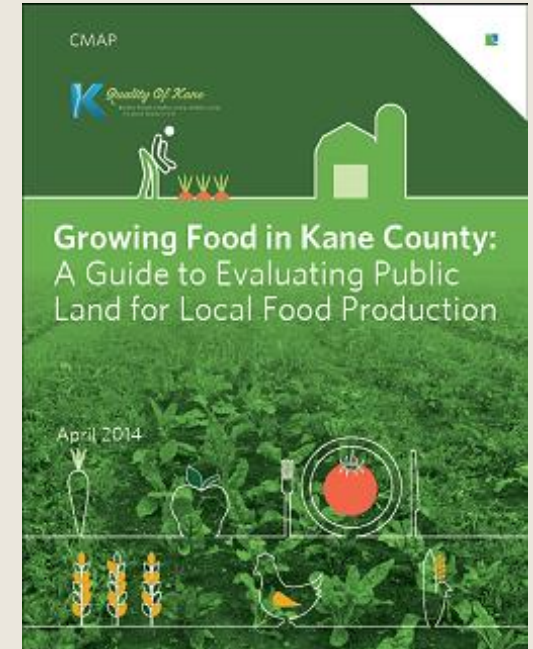
Chicago Metropolitan Agency for Planning (CMAP)

- POLICY – Municipal guide to help build local food systems
 - *Provide access to land, facilities and infrastructure to give farmers, distributors, and food entrepreneurs a chance to become established.*
 - *Adopt or modify policies and standards to encourage local food operations and to reduce the cost and uncertainty of projects.*
 - *Encourage the market, innovation, businesses, and entrepreneurs through policies such as local food procurement targets for schools, workforce development opportunities, and hunger assistance programs.*
 - *Support and participate in a forum to discuss and address local food system issues, to coordinate policy initiatives, programs, and events, and to connect buyers and sellers.*



Kane County Food Hub

- Meet the wholesale distribution needs of local growers and food buyers, while also supporting communities with limited access to produce and other fresh foods
- Study was conducted from March 2015 to July 2016
- Purchases farm products sourced from growers primarily within the county, and aggregates and sells this product to wholesale buyers in and outside of the county. The food hub will provide postharvest handling (washing, sorting, packing) services, aggregation and storage, as well as inbound and outbound distribution. **Also to DuPage.**
- Goal: Identify additional services and/or business lines to incorporate into a food hub in Kane County that are specifically focused on helping spur positive health outcomes
- The food hub business model developed through the previous phases would require an 8,000 square foot warehouse, and would generate \$3.4 million in sales and \$150 thousand in cash flow



DuPage Needs:

- **Farming Capacity Assessment:**
 - Land – Current availability; Future Public/Private Partnerships
 - Rooftops
 - Indoor – Aqua/hydroponics
 - Temporary/Transportable
- Centralized to distributed:
 - **Backyard Growers (“Low hanging fruit”)**
 - Community neighborhood growing spaces
 - Gleaning
- **Policy and Strategic Planning Incorporation**
- **Job creation**
 - Community Cooperatives
- **Community Assessment of Access and Barriers**
- **Education & Training:**
 - Farmers; Processing and Preparation; Distribution; Compost
- **Connection & Collaboration:**
 - Land/space; Farmers; Markets/Consumers
- **Inspiration & Marketing:**
 - “Victory Garden Movement”

