

DuPage County Snapshot

Poverty Statistics:

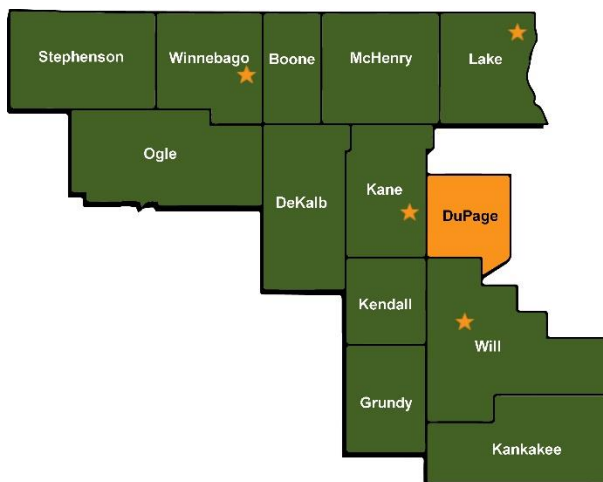
- 65,317 or 7.1%** - residents living in Poverty (*US Census 2014*)
- 74,090 or 8.0%** - food insecure residents (*Map the Meal Gap 2016*)
- 32,490 or 14.6%** - food insecure children (*Map the Meal Gap 2016*)
- \$22.62/hour or \$47,040/annual** - wage needed to rent a 2 bedroom apartment (*National Low Income Housing Coalition*)
- 110 hours/week at minimum wage** to afford a 2 bedroom apartment (*National Low Income Housing Coalition*)

Meeting the Meal Gap:

- 13.4 million meals distributed in FY16:**
 - 6.6 million meals distributed through our retail store donation programs
 - 6 million meals distributed to food pantries
 - 834,820 meals distributed through the Food Bank's programs (such as youth and senior programs)

Northern Illinois Food Bank's network members:

- 54 Food Pantries
- 1 Soup Kitchens
- 18 Backpack schools
- 60 Youth Program Sites
- 6 Group homes/Shelters
- 6 Senior Program
- 1 Daycares



Here is a snapshot of who Northern Illinois Food Bank serves in DuPage County (Hunger in America 2014)

- 107,100 people are served annually
- 14,600 people are served weekly

AGE

- 32% are children under age 18
- 20% are adults from age 18-29
- 24% are adults from age 30-49
- 16% are adults from age 50-64
- 8% are seniors age 65 and older

POVERTY

- 57% of households have incomes that fall at or below the federal poverty level

EMPLOYMENT

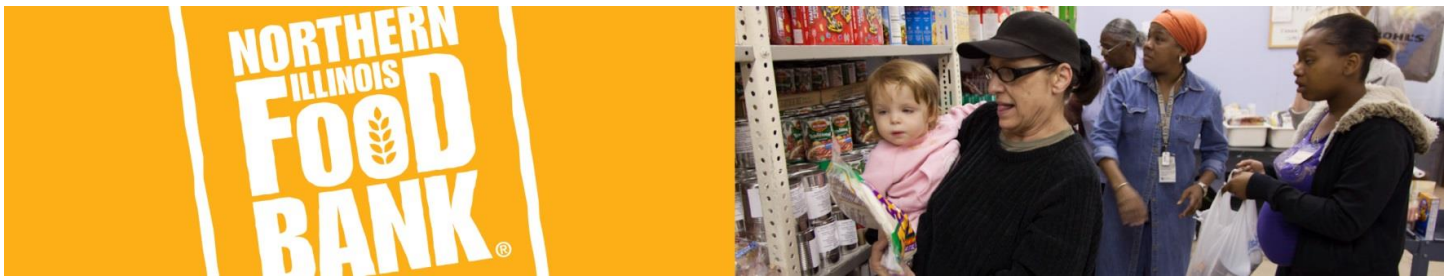
- 71% of households have an adult member that worked for pay in the last 12 months

SPENDING TRADE-OFFS

- 82% of households reported they had to choose between paying for food and utilities in the past 12 months
- 77% of households chose between paying for food and transportation in the past 12 months.
- 72% of households purchased inexpensive, unhealthy food.
- 67% of households chose between paying for food and paying their rent or mortgage at least once in the past 12 months
- 63% of households chose between paying for food and paying for medicine at least once in the past 12 months

HEALTH

- 61% of households have unpaid medical bills
- 50% of households report at least one member with high blood pressure
- 32% of households report at least one member with diabetes



DuPage County Network Members

Food Pantries

1st Assembly Of God
 Addison Community Switchboard
 Addison Township Pantry
 Bensenville-Wood Dale Pantry
 Calvary Church Pantry
 Canticle Place - Franciscan Ministry
 Christ the King - St Vincent DePaul
 Christian Worship Center
 Church of Christ Food Pantry
 Disciples Food Pantry
 Elmhurst Walk-In Ministry
 Elmhurst-Yorkfield Food Pantry
 Fish of Downers Grove
 Glen Ellyn Food Pantry
 Glen Ellyn Food Pantry and Care Center
 Hand & Hand Food Pantry - Harvard Evangelical
 Hands of Hope Food Pantry
 HCS Family Services
 ICNA Relief Thrift Store & Food Pantry
 Interfaith Food Pantry
 Itasca Food Pantry
 Lisle Township Pantry
 Loaves + Fishes Community Services
 Lombard-Villa Park Pantry
 Marian Park Food Pantry
 Messiah Baptist - Addison
 Milton Township Pantry
 Muslim Society, Inc.
 Neighborhood FP at Immanuel
 Neighborhood FP at LCM
 Neighborhood FP at Real Life Church
 Neighborhood FP at Resurrection
 Neighborhood FP at St. Andrew's
 Neighborhood FP at WeGo Together
 New Life Bilingual Food Pantry
 Our Lady of Mount Carmel Food Pantry
 People's Resource Center
 PRC-Southeast - Westmont
 R.E.A.C.H. Ministries Inc.
 Roselle UMC Community Pantry
 Salvation Army Oakbrook
 St. Joseph Pantry - Addison
 St. Joseph's - SVDP Downers Grove
 St. Mary of Gostyn - SVDP
 St. Paul Evangelical - Bloomingdale
 St. Pius - St. Vincent De Paul Food Pantry
 St. Thomas the Apostle

Trinity Lutheran - Roselle
 Village Baptist Church
 Wayne Township Pantry
 West Suburban Community Pantry
 York Township Pantry

Soup Kitchens

Community Table- 1st Church
 Lombard

Child Nutrition

Addison Public Library (SFSP, CACFP)
 Addison SPC (CACFP)
 Addison Trail High School (CACFP)
 Anne M. Jeans (SFSP, CACFP)
 Ardmore Elementary (BackPack)
 Army Trail Elementary (BackPack)
 Bensenville Park District (SFSP, CACFP)
 Bensenville Public Library (SFSP)
 Bensenville Teen Center (SFSP, CACFP)
 Conrad Fischer (BackPack)
 Currier Elementary (SFSP, CACFP)
 Edgewood School (BackPack)
 Faith Community Church (SFSP)
 First United Methodist Church (CACFP)
 Fullerton Elementary (BackPack)
 Gary School (CACFP)
 Georgetown Elementary (CACFP)
 Glen Ellyn Public Library (SFSP)
 Goodrich Elementary (BackPack)
 Greenbrook Elementary School (CACFP)
 Henry Hyde Resource Center (SFSP, CACFP)
 Jefferson Elementary (BackPack)
 Johnson Elementary (CACFP)
 Lincoln Elementary (BackPack, CACFP)
 Living Christ Church (SFSP)
 Longwood Elementary (CACFP)
 Madison Elementary (BackPack, CACFP)
 Meadowview Elementary (BackPack)
 Murphy School (BackPack)
 NaperBridge Alive (SFSP)
 New Hope Church (SFSP)
 North Elementary (BackPack, SFSP)
 Outreach at Villagebrook (SFSP)

Outreach Community Center (SFSP)
 Pioneer School (CACFP, SFSP)
 Puente del Pueblo (SFSP, CACFP)
 Renaissance at Carol Stream (SFSP)
 Schafer Elementary School (CACFP)
 Siple School (BackPack)
 Stevenson Elementary (BackPack)
 Timberlake Apartments (CACFP)
 Tioga Elementary (BackPack)
 Towne and Country Apts (CACFP, SFSP)
 Villa Park Public Library (SFSP)
 Warrenville Park District (SFSP)
 WAYS (SFSP)
 Wegner - Puente del Nino (CACFP)
 Wesley Elementary (BackPack)
 West Chicago Early Learning Center (SFSP)
 West Chicago DREAMS Pioneer (SFSP)
 West Chicago Middle School (CACFP)
 West Chicago Public Library (SFSP)
 Western Trails Elementary (SFSP)
 Wheaton Square Apartments (SFSP)
 Willow Creek School (BackPack)
 Willowbrook Corner Resource Center (SFSP)
 Wood Dale Public Library (SFSP)
 Woodridge Public Library (SFSP)
 York Center School (BackPack)
 York Community Resource Center (SFSP, CACFP)

Senior Programs

Castle Towers
 Green Castle of Elmhurst
 Humanitarian Service Project
 Immanuel Residences of Downers Grove
 Peace Manor of Downers Grove
 People's Resource Center
 West Suburban Community Pantry

Other

360 Youth Services
 Catholic Charities Hope House
 Cupertino Home
 Family Shelter Service
 Fox Valley Preschool Academy
 Lutherbrook Childrens Center
 Serenity House Counseling Service